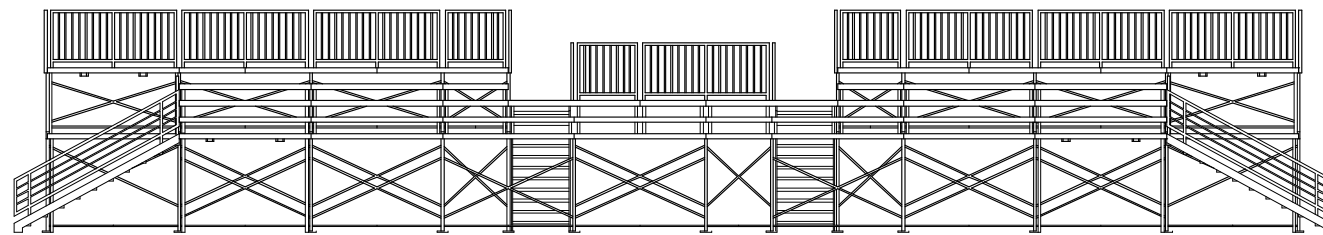
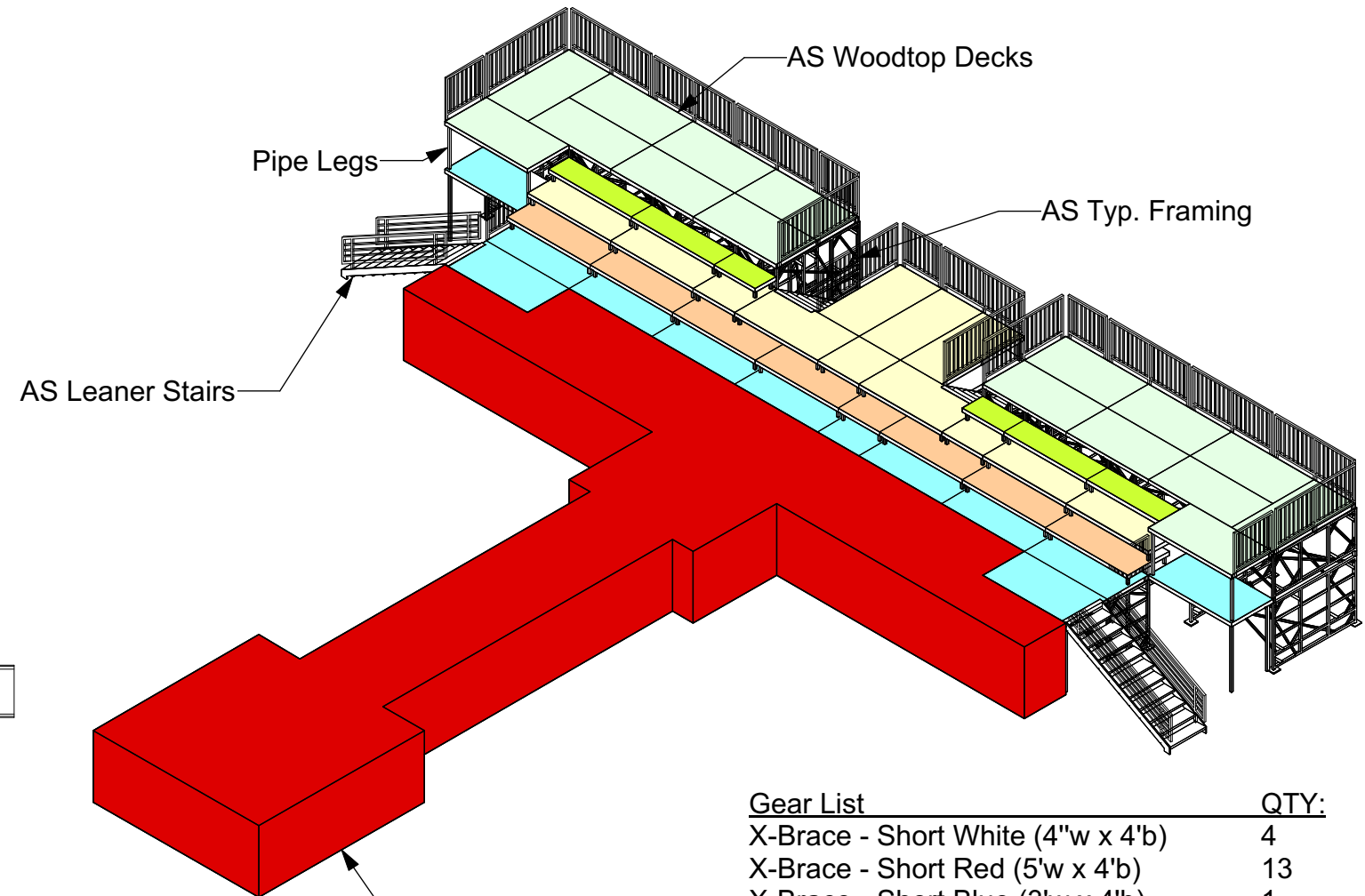


Plan View

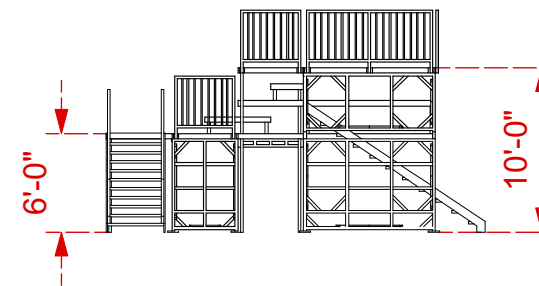


Front View



AS Leaner Stairs

Existing Stage



Side View

Gear List	QTY:
X-Brace - Short White (4"w x 4'b)	4
X-Brace - Short Red (5"w x 4'b)	13
X-Brace - Short Blue (3"w x 4'b)	1
X-Brace - Long White (4"w x 8'b)	12
X-Brace - Long Red (5"w x 8'b)	41
X-Brace - Long Blue (3"w x 8'b)	7
Wall 6'x8'	13
Wall 6'x4'	9
Wall 4'x8'	10
Stair Osha 6'	2
Stair Leaner 8'	2
Spigot 5" Generic	20
Pipe Leg 6'	8
Pipe Leg 4'	4
Pipe Leg 2'	30
Pipe Leg 1'	74
Header 4'	9
Handrail Osha 8' (SLV)	13
Handrail Osha 4' (SLV)	7
Deck Hand	8
Deck 4'x8'	54
Deck 4'x4'	4
Deck 2'x8'	4
Deck 2'x4'	2
1" footpad	44
<b>Total:</b>	<b>395</b>